



**SAVE UP TO 20% ON HVAC ENERGY COSTS
BY AIR SEALING & INSULATING YOUR HOME.¹**

Start your air sealing project by insulating your whole house fan, knee wall doors, attic access hatch, and/or disappearing stairway.

Start Saving Today on Your Electric and Gas Bills!!!

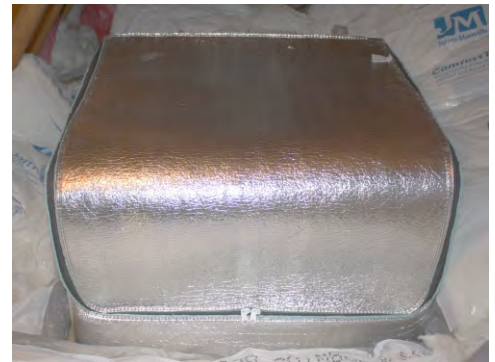
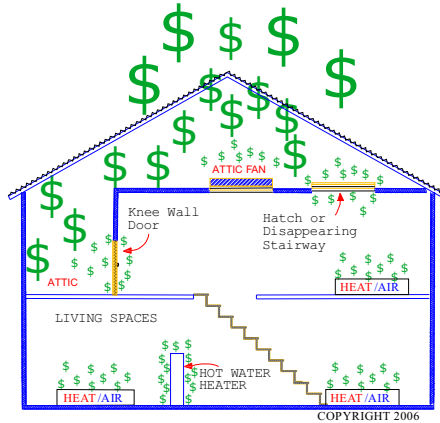
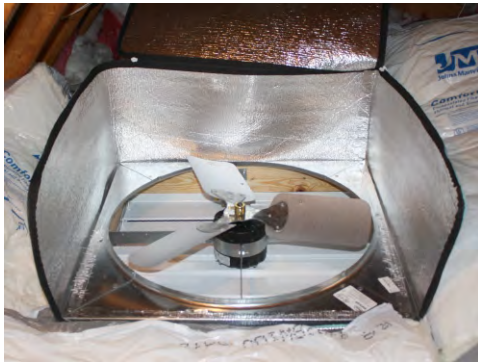
FanZip® Attic Fan Insulator Model # FZ-2828-16

Fits most manufacturers 24 inch blade fans.

Custom Sizes Available.

U.S. Patent # D586,473

ARE YOU WASTING MONEY?



Short Payback \$\$\$ Typical HVAC Savings 5%--10%

Installs in Less Than Ten Minutes

Multi-Layer Closed Cell Insulation

**Low Profile Opening
Easy Access to Fan for service.**

Effective R-Value 13 97% Radiant Heat Reflective

**Green Building Insulation Product
Noise Barrier**

Class A/Class 1 Fire Rated

Virtually Eliminates Drafty Fan Openings

¹http://www.energystar.gov/index.cfm?c=home_sealing.hm_improvement_sealing

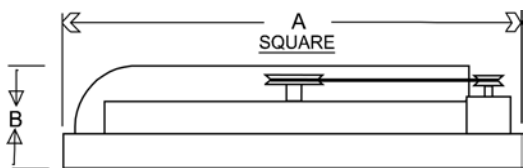


FanZip® Insulator Installation Instructions

1. FanZip® unit comes fully assembled ready to install and fits the following Whole House Fan Models:

Manufacturer	Model	Blade Size	Frame Size (A)X(A)X(B)	Motor Type
Masterflow	WHFS24M	24	28 X 28 X 9	Direct Drive
Air Vent	3C545	24	28 X 28 X 7	Direct Drive

2. Measure dimension A and B. If your fan frame dimension is not within the size and height listed, do not try to install the insulated cover. Contact the manufacturer for a cover designed to fit your fan frame width and height dimensions.



STOP read this document
in its entirety before
proceeding with installation.

3. If there is an electrical wire supplying the fan located on the outside of the fan base, secure the electrical wire to the frame using the appropriate straps.
4. Clean the fan base with a dry cloth and apply a bead of caulking about 1 inch above the bottom of the fan base on all four sides.
5. Install the corner protectors provided on the fan frame where the metal fan shroud corners meet to cover the sharp edges. This will help prevent damage to yourself and the FanZip® cover during installation. Unzip the top of the FanZip® insulator half-way to allow for easy installation. Place the FanZip® insulator over the whole house fan frame beginning at the front corners. **BE SURE TO CENTER THE LOW PROFILE OPENING ON THE SIDE WHERE THE FAN MOTOR IS MOUNTED** (belt driven models). Otherwise, the opening can be on either side. The position of the low profile opening allows easy servicing of the unit prior to seasonal use.
6. During installation, make sure the walls cover the caulking on all four sides. Staple the unit at the front once you have it centered and lower the sides and rear of the unit over the frame. Install a staple every 8 to 10 inches in the wood frame to hold the wall in place. **AVOID STAPLING CLOSE TO THE ELECTRIC WIRE THAT SUPPLIES THE FAN WITH POWER.**
7. Staple the sides so they are snug against the frame and pull the rear sections together before stapling the back of the unit. After stapling the unit securely to the frame, trim the overlapping insulation if desired and use the special reinforced tape to seal the pieces of material together on the inside and outside of the FanZip® cover. Seal the electrical power wire with caulking where it exits from the cover after installation.
8. Additional insulation may be placed over the top of the unit to enhance insulation value during off season downtimes if desired. Apply the warning sticker at the Whole House Fan switch to **OPEN FAN COVER** prior to operation.

NOTE: Only qualified professionals are recommended to install this unit. PES will not be liable for any damages consequential or otherwise arising from improper installation of the FanZip® insulated Cover, poor maintenance of the whole house fan or other causes resulting in consequential damages.

Caution: Please use caution when working around electrical sources. Beware of stapling electrical wires during installation or contacting any power source. Bodily harm or death may occur if proper precautions are not taken to prevent contact with electrical sources.